

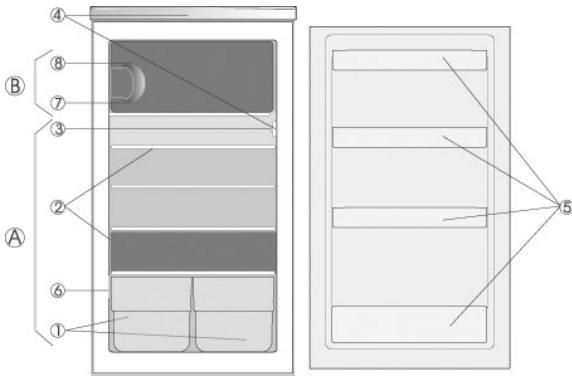
## **Instructions for use**

### **KVA 172 Optima+**

---

**Bauknecht AG, Industriestrasse 36, 5600 Lenzburg, [www.bauknecht.ch](http://www.bauknecht.ch)**

Verkauf	Telefon 0848 801 002	Fax 0848 801 017	<a href="mailto:verkauf@bauknecht.ch">verkauf@bauknecht.ch</a>
Kundendienst	Telefon 0848 801 001	Fax 0848 801 003	<a href="mailto:service@bauknecht.ch">service@bauknecht.ch</a>
Ersatzteile	Telefon 0848 801 005	Fax 0848 801 004	<a href="mailto:ersatzteilverkauf@bauknecht.ch">ersatzteilverkauf@bauknecht.ch</a>



## A. Refrigerator Compartment

1. Crispers
2. Shelves / Shelf area
3. Light
4. Thermostat/ control panel lock (depending on the model)
5. Door trays
6. Rating plate

## B. Freezer Compartment

7. Ice cube tray (inside the compartment)
8. Freezer compartment door

## Closing the Low temperature compartment

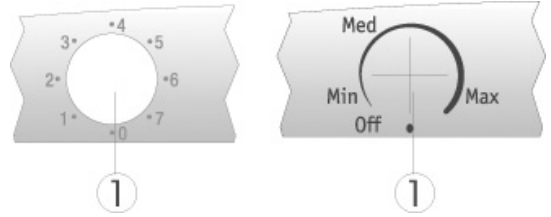
Depending on the model, to close the door of the lowtemperature compartment either press it gently until you hear click or pull the movable handle and then press it.

**Note:** The number and type of shelves and the design of accessories may vary from one model to another. All shelves, door trays and racks are removable.

**Important: Refrigerator accessories must not be washed in a dishwasher.**

**Note:** Ambient air temperature, the frequency of door opening and the position of the appliance can affect the internal temperatures of the refrigerator. These factors must be taken into account when setting the thermostat

## Control panel



1. Thermostat knob (depending on the model)

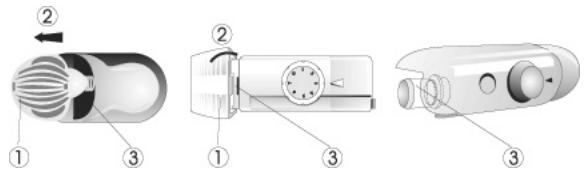
Thermostat set to **0/Off**: refrigeration compartment switched off.

Thermostat set to **1-Min**: **minimum** refrigeration.

Thermostat set to **7-Max**: **maximum** refrigeration.

**The recommended thermostat setting is 3-4/Med.**

## Light - how to replace the bulb



Before replacing the bulb, remove the power plug from the mains socket. Next:

- 1 - Hold the diffuser as shown and squeeze it slightly.
- 2 - Slide it towards the rear of the appliance.
- 3 - Unscrew the light bulb as illustrated in the picture.

## BEFORE USING THE APPLIANCE

- Your new appliance is designed exclusively for domestic use.

**To ensure best use of your appliance, carefully read the operating instructions which contain a description of the appliance and advice on storing and preserving food.**

**Keep this handbook for future reference.**

1. After unpacking the appliance, make sure it is not damaged and that the door closes properly. Any damage must be reported to the dealer within 24 hours of delivery of the appliance.
2. Wait at least two hours before switching the appliance on, in order to ensure that the refrigerant circuit is fully efficient.
3. Make sure installation and the electrical connection are carried out by a qualified technician according to the manufacturer's instructions and in compliance with the local safety regulations.
4. Clean the inside of the appliance before using it.

## SAFEGUARDING THE ENVIRONMENT


### 1. Packing

The packing material is 100% recyclable and bears the recycling symbol. Comply with the local regulations for disposal. Keep the packing materials (plastic bags, polystyrene parts, etc.) out of the reach of children, as they are a potential source of danger.

### 2. Scrapping/Disposal

The appliance is manufactured using recyclable material.

This appliance is marked in compliance with European Directive 2002/96/EC on Waste Electrical and Electronic Equipment (WEEE). By ensuring the correct scrapping of this appliance, you can help prevent potentially negative consequences for the environment and the health of persons.

The symbol  on the appliance, or on the accompanying documents, indicates that this appliance should not be treated as domestic waste but must be taken to a suitable collection centre for the recycling of electrical and electronic equipment. When scrapping the appliance, make it unusable by cutting off the power cable and removing the doors and shelves so that children cannot easily climb inside.


Scrap the appliance in compliance with local regulations on waste disposal, taking it to a special collection centre; do not leave the appliance unattended even for a few days, since it is a potential source of danger for children. For further information on the treatment, recovery and recycling of this appliance, contact your competent local office, the household waste collection service or the shop where you purchased the appliance.

## Information:

This appliance does not contain CFC (the refrigerant circuit contains R134a) or HFC (the refrigerant circuit contains R600a) (refer to the rating plate inside the appliance).

Appliances with isobutane (R600a): Isobutane is a natural gas without environmental impact but is flammable. Therefore, make sure the refrigerant circuit pipes are not damaged

## Declaration of conformity

- This appliance is intended for storing food and is manufactured in conformity with European regulation (EC) No. 1935/2004. 
- This product has been designed, manufactured and marketed in compliance with:
  - the safety objectives of Low Voltage Directive 73/23/EEC;
  - the protection requirements of "EMC" Directive 89/336/EEC, amended by Directive 93/68/EEC.
- Electrical safety of the appliance is guaranteed only if it is connected to an efficient and approved earthing system.



## PRECAUTIONS AND GENERAL RECOMMENDATIONS



- During installation, make sure the appliance does not damage the power cable.
- Make sure the appliance is not near a heat source.
- To guarantee adequate ventilation, leave a space on both sides and above the appliance and follow the installation instructions.
- Keep the appliance ventilation openings free.
- Power cable modification or replacement must only be carried out by qualified personnel.
- It must be possible to disconnect the appliance from the power supply by unplugging it or by means of a mains two-pole switch installed upstream of the socket.
- Make sure the voltage indicated on the appliance rating plate corresponds to that of your home.
- For the water connection, use the pipe supplied with the new appliance; do not reuse that of the previous appliance.
- Install and level the appliance on a floor strong enough to take its weight and in a place suitable for its size and use.
- The appliance must be handled and installed by two or more persons.
- Be careful not to damage the floors when moving the appliance (e.g. parquet).
- Do not use single/multi-adapters or extension cords.

- Install the appliance in a dry and well-ventilated place. The appliance is arranged for operation in places where the temperature comes within the following ranges, according to the climatic class given on the rating plate. The appliance may not work properly if it is left for a long period at a temperature outside the specified range.

Climatic Class	Amb. T. (°C)	Amb. T. (°F)
SN	From 10 to 32	From 50 to 90
N	From 16 to 32	From 61 to 90
ST	From 16 to 38	From 61 to 100
T	From 16 to 43	From 61 to 110

- Do not store or use petrol, gas or flammable liquids in the vicinity of this or other electrical appliances. The fumes can cause fires or explosions.
- Do not use mechanical, electric or chemical means other than those recommended by the Manufacturer to speed up the defrost process.
- Do not damage the appliance refrigerant circuit pipes.
- Do not use or place electrical appliances inside the product if they are not of the type expressly authorised by the Manufacturer.
- This appliance is not designed for use by young children or the infirm without supervision.
- To avoid the risk of children becoming trapped and suffocating, do not allow them to play or hide inside the appliance.
- Do not swallow the contents (non-toxic) of the ice packs (if provided).
- Use the refrigerator compartment only for storing fresh food and the freezer compartment only for storing frozen food, freezing fresh food and making ice cubes.
- Do not store liquids in glass containers in the freezer compartment since they may burst.
- Do not eat ice cubes or ice lollies immediately after taking them out of the freezer since they may cause cold burns.
- Before carrying out any maintenance or cleaning operation, unplug the appliance or disconnect the power supply.
- All appliances equipped with an ice-maker and water dispenser must be connected to a water supply that delivers drinking water only (with mains water pressure of between 0.17 and 0.81 Mpascales (1.7 and 8.1 bar)). Ice-makers and/or water dispensers not directly connected to the water supply must be filled with drinking water only.
- **The Manufacturer declines any liability if the above advice and precautions are not respected.**

## RECOMANDATION IN CASE OF NO USE OF THE APPLIANCE

### Short vacation

There is no need to disconnect the appliance from the power supply if you will be away for less than three weeks. Use up perishable food, freeze other food.

If your appliance has an automatic ice maker:

1. Turn it off.
2. Shut off the water supply to the automatic ice maker.
3. Empty the ice bucket.

### Long vacation

Remove all the food if you are going away for three weeks or more. If your appliance has an automatic ice maker:

1. Turn it off.
2. Shut off the water supply to the automatic icemaker at least a day before.
3. Empty the ice bucket.

Fix some wooden or plastic wedges to the upper part of both doors with adhesive tape and leave the doors open enough for air to circulate inside both compartments. This will prevent odour and mould from setting in.

### Moving

1. Take out all internal parts.
2. Wrap them well, and fix them together with adhesive tape so that they do not bang together or get lost.
3. Screw the adjustable feet so that they do not touch the support surface.
4. Close and fix both doors with adhesive tape and, again using adhesive tape, fix the power cable to the appliance.

### Power failure

In the event of a power failure, call the local office of your electricity supply company and ask how long it is going to last. Note: Bear in mind that a full appliance will stay cold longer than a partially filled one.

If ice crystals are still visible on the food, it may be frozen again, although flavour and aroma may be affected.

If food is found to be in a poor condition, it is best to throw it away.

For power failures lasting up to 24 hours.

1. Keep both doors of the appliance closed. This will allow the stored food to stay cold as long as possible.

For power failures lasting more than 24 hours.

1. Empty the freezer compartment and arrange the food in a portable freezer. If this type of freezer is not available and, likewise, no artificial ice packs are available, try to use up the food, which is more easily perishable.
2. Empty the ice bucket.

## MAINTENANCE AND CLEANING

Before any cleaning or maintenance operation, unplug the appliance from the mains or disconnect the electrical power supply.

Periodically clean the appliance with a cloth and a solution of lukewarm water and neutral detergent specifically for refrigerator interiors.

Never use detergents or abrasives. Never clean refrigerator parts with flammable fluids. The fumes can create a fire hazard or explosion.

Clean the outside of the appliance and the door seal with a damp cloth and dry with a soft cloth.

Do not use steam cleaners.

Clean the condenser using a vacuum cleaner, proceeding as follows: remove the front plinth (see installation manual) and proceed to clean the condenser

### Important:

- The buttons and control panel display must not be cleaned with alcohol or alcohol-derived substances, but with a dry cloth.
- The refrigeration system pipes are located near the defrost pan and can become hot. Periodically clean them with a vacuum cleaner.

## REPLACING THE BULB

**Always disconnect the appliance from the power supply before replacing any light bulbs.** How to replace the refrigerator compartment bulb.

1. In some models a special bulb is used
2. The bulb should not exceed **15W**
3. Bulb change instruction is put in the chart (PRODUCT SHEET)

## TROUBLESHOOTING GUIDE

### Before contacting After-sales Service....

Performance problems often result from little things you can find and fix yourself without tools of any kind.

**Noises coming from your appliances are normal since it has a number of fans and engines to regulate performances that switch on and off automatically.**

**Some of the functional noises can be reduced through**

- Levelling the appliance and installing it on an even surface
- Separating and avoiding contact between the appliance and furniture.
- Checking if the internal components are correctly placed.
- Checking if bottles and containers are not in contact with each other.

**Some of the functional noises you might hear:**  
**A hissing sound when switching on the appliance for the first time or after a long pause.**

**A gurgling sound when refrigerant fluid enters into the pipes.**

**Buzzing sound when water valve or fan start working.**

**A cracking sound when compressor starts or when ready ice drops into ice box**  
**Abrupt clicks when compressor switches on and off.**

**Automatic Ice maker noises (on some models):**

- Since your appliance has an automatic ice maker, you may hear buzzing (from the water valve), trickling water and the clatter of the ice falling into the bucket.

**The appliance is not working:**

- Is the power cable plugged into a live socket with the proper voltage?
- Have you checked the protection devices and fuses of the electrical system in your home?

**If your automatic ice maker does not work (on some models):**

- Has the freezer had enough time to become cold? With a new appliance this may take overnight.
- Is the automatic ice maker ON/OFF button set to ON?
- Make sure the lever of the automatic ice maker, inside the freezer compartment, is not turned to OFF, i.e. in the horizontal position (on some models).
- Is the water turned on? Is water getting to the automatic ice maker?
- Is there a water filter installed on the appliance (on some models)? This filter may be clogged or installed incorrectly. First, check the filter installation instructions to ensure that the filter was installed correctly and is not clogged. If installation or clogging is not a problem, call a qualified person or a technician.

**If there is water in the defrost pan:**

- This is normal in hot, damp weather. The pan can even be half full. Make sure the appliance is level so that the water does not overflow

**If the edges of the appliance cabinet, which come in contact with the door seal, are warm to the touch:**

- This is normal in hot weather and when the compressor is running.

**If the light does not work:**

- Have you checked the protection devices and fuses of the electrical system in your home?
- Is the power cable plugged into a live socket with the proper voltage?
- Has the light bulb burnt out?

**In the case of burnt-out bulbs:**

1. Always unplug the appliance from the mains.
2. See chapter "Maintenance and Cleaning".

**If the motor seems to run too much:**

- Is the condenser free of dust and fluff?
- Are the doors properly closed?
- Are the door seals properly fitted?
- On hot days or if the room is warm, the motor naturally runs longer.
- If the appliance door has been left open for a while or if large amounts of food have been stored, the motor will run longer in order to cool down the interior of the appliance.

- Motor running time depends on different things: number of door openings, amount of food stored, temperature of the room, setting of the temperature controls.

#### **If the appliance temperature is too high:**

- Are the appliance controls correctly set?
- Has a large amount of food been added to the appliance?
- Check that the doors are not opened too often.
- Check that the doors close properly.
- Make sure that air flow vents inside the compartment are not blocked, as this prevents the circulation of cold air.

#### **If there is moisture build-up:**

- Make sure that air flow vents inside the compartment are not blocked, as this prevents the circulation of air.
- Make sure that the food is properly packaged. Dry any dampness on food containers before placing them in the appliance.
- Check that the doors are not opened too often. When the door is opened, humidity from the room air enters the appliance. The more often the door is opened, the faster humidity builds up, especially when the room itself is very humid.
- If the room is very humid, it is normal for moisture to build up inside the refrigerator.

#### **If the doors do not open and close properly:**

- Check that food packages are not blocking the door.
- Check that the internal parts or automatic ice maker are not out of position.
- Check that the door seals are not dirty or sticky.
- Ensure the appliance is level.

## **AFTER-SALES SERVICE**

### **Before contacting After-Sales Service:**

Switch the appliance on again to see if the problem has been solved. If it has not, disconnect the appliance from the power supply and wait for about an hour before switching on again.

If, after performing the checks described in the Troubleshooting Guide and switching the appliance on again, your appliance still does not work properly, contact the After-sales Service, explain the problem.

### **Specify:**

- the model and appliance serial number (stated on the rating plate),
- the nature of the problem,
- the Service number (the number after the word SERVICE on the data plate on the inside of the appliance),
- your full address,
- your telephone number and area code.

**SERVICE** 0000 000 00000



### **Note:**

**The direction of door opening can be changed. If this operation is performed by After-sales Service it is not covered by the warranty.**

## **ELECTRICAL CONNECTION**

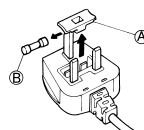
### **1) For Great Britain only**

**Warning - this appliance must be earthed**

#### **Fuse replacement**

If the mains lead of this appliance is fitted with a BS 1363A 13amp fused plug, to change a fuse in this type of plug use an A.S.T.A. approved fuse to BS 1362 type and proceed as follows:

1. Remove the fuse cover (A) and fuse (B).
2. Fit replacement 13A fuse into fuse cover.
3. Refit both into plug.



### **Important:**

The fuse cover must be refitted when changing a fuse and if the fuse cover is lost the plug must not be used until a correct replacement is fitted.

Correct replacement are identified by the colour insert or the colour embossed in words on the base of the plug.

Replacement fuse covers are available from your local electrical store.

### **2) For the Republic of Ireland only**

The information given in respect of Great Britain will frequently apply, but a third type of plug and socket is also used, the 2-pin, side earth type.

### **3) Socket outlet / plug (valid for both countries)**

If the fitted plug is not suitable for your socket outlet, please contact Whirlpool Service for further instruction. Please do not attempt to change plug yourself. This procedure needs to be carried out by a qualified Whirlpool technician in compliance with the manufactures instructions and current standard safety regulations.